

**162 kW**

**Rated Power**

**17100 kg**

**Total Weight**

**3.0 m<sup>3</sup>**

**Bucket Capacity**



## WHEEL LOADER

- The wheelbase is lengthened. Thus, the advantages of the long wheelbase are used and it can be used under heavy load.
- The wing box with castling lug is adopted for the front frame, and the bending plate with various stiffness is welded into the box beam with deformed section to make up the rear frame. Thus, it has high bearing capacity.
- The rolling bearing+knuckle bearing are adopted in the hinged position of the front and rear frames. The bearing capacity is high and the it is highly stable.
- Designed with big steering angle, flexible, suitable to a lot of workplaces
- Pressurized cab, increasing 20% of space, wide view, sound insulation and noise reduction, comfortable to operate.
- Varied configuration, complete parts, meeting construction requirements for different areas and working conditions
- Configure special models for conditions of the logical power plants: for example, grasping grass machine (configure high loader, grasping grass machine, oil filter, spark arrester, single-layer radiator and so on)



### Head Office Gaya Makmur Putra

Jl. Lingkar Luar Barat No.3 Rawa Buaya - Cengkareng

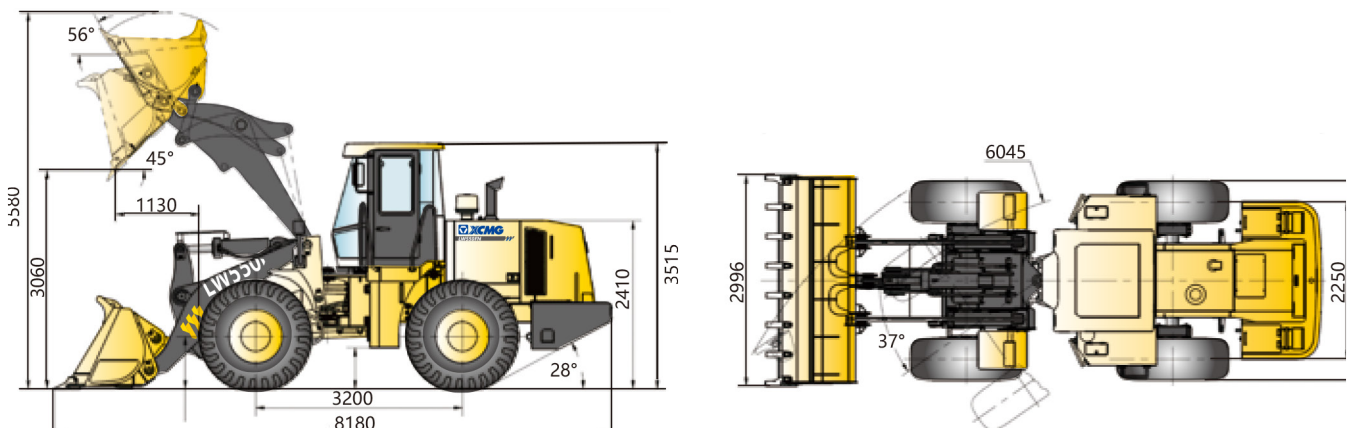
Jakarta Barat - Indonesia 11740

Telp : (62 21) 5828 799

Email : [info@gmtractors.net](mailto:info@gmtractors.net)

Website : [www.gmtractors.net](http://www.gmtractors.net)

Description		Parameters
Rated operating load		5300 kg
Bucket capacity		3.0(3.0~4.5) m <sup>3</sup>
Machine weight		17100 kg
Dump clearance at maximum lift		3060 mm
Reach at maximum lift		1130 mm
Wheelbase		3200 mm
Tread		2250 mm
Working height		5580(Standard arm 3.0) mm
Maximum breakout force		170 kN
Hydraulic cycle time-raise		≤5 s
Total cycling time		10 s
Min. turning radius(over tire)		6045 mm
Articulation angle		37°
Gradeability		28°
Tire specification		23.5-25-16PR
Overall dimensions (length x width x height)		8180×2996×3515
Emission standard		China II
Rated power		162 kW
Capacity of fuel tank		250 L
Capacity of hydraulic oil tank		210 L
Driving speed	1st speed (forward/reverse)	13/18 km/h
	2nd speed (forward/reverse)	41 km/h



THE SPECIFICATIONS ARE SUBJECT TO CHANGE WITHOUT NOTICE. THE PICTURES MAY INCLUDE OPTIONS. THE ACTUAL COLOR & APPEARANCE OF THE PRODUCT MAY DIFFER FROM WHAT IS SHOWN.

### Networking

Semarang | Surabaya | Denpasar | Kupang | Medan | Pekanbaru | Palembang | Batam | Balikpapan | Banjarmasin | Makassar | Manado | Kendari | Samarinda | Pontianak | Manado